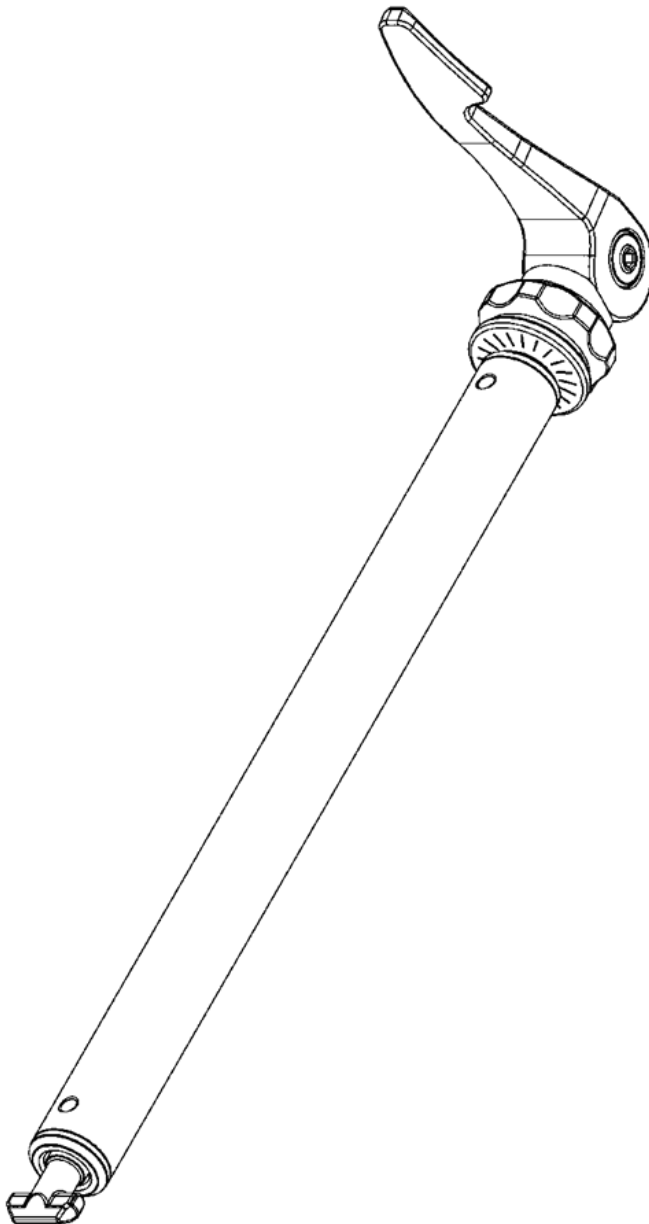
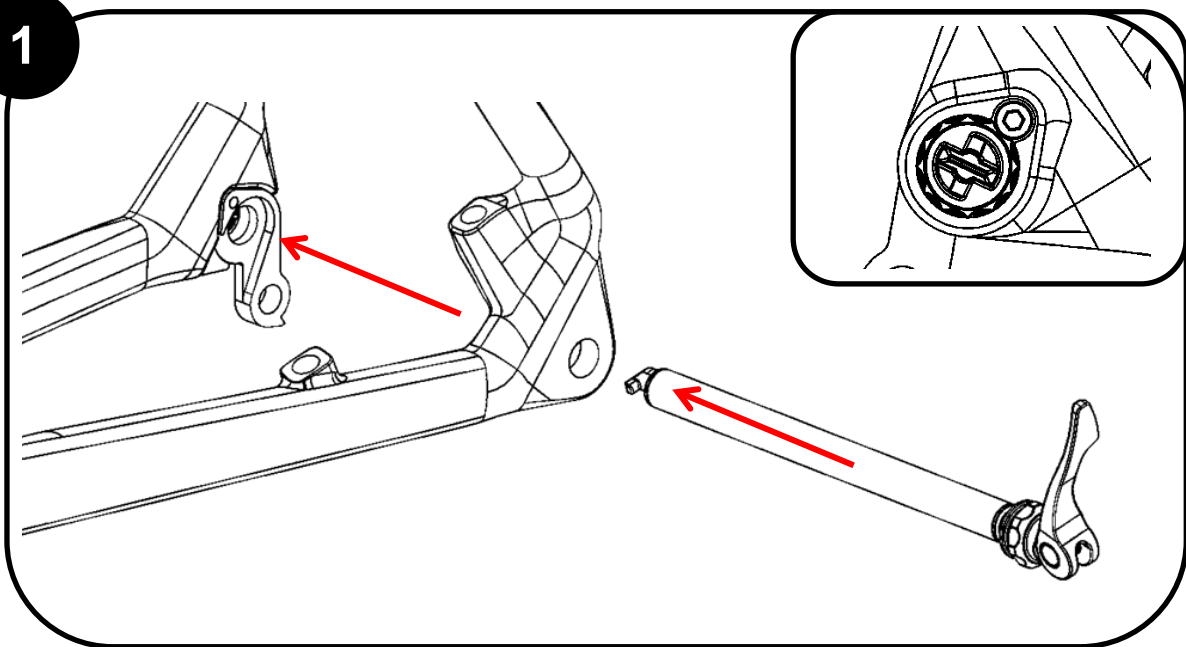




R.A.T. ***Rapid
Axle
Technology***

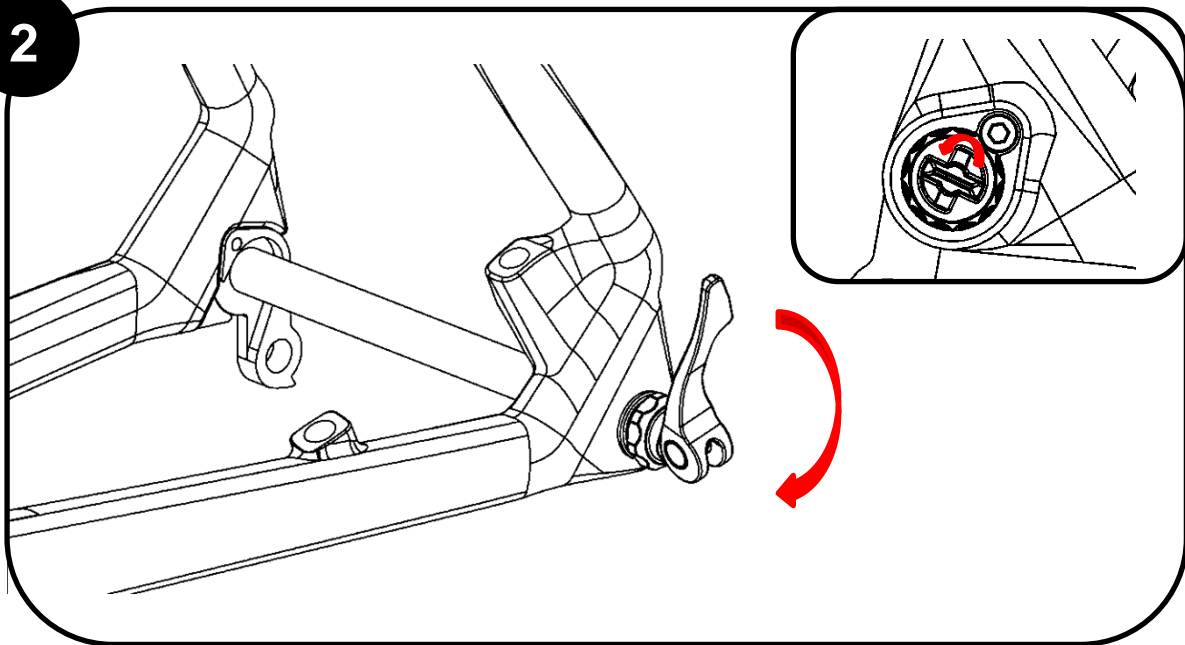


1



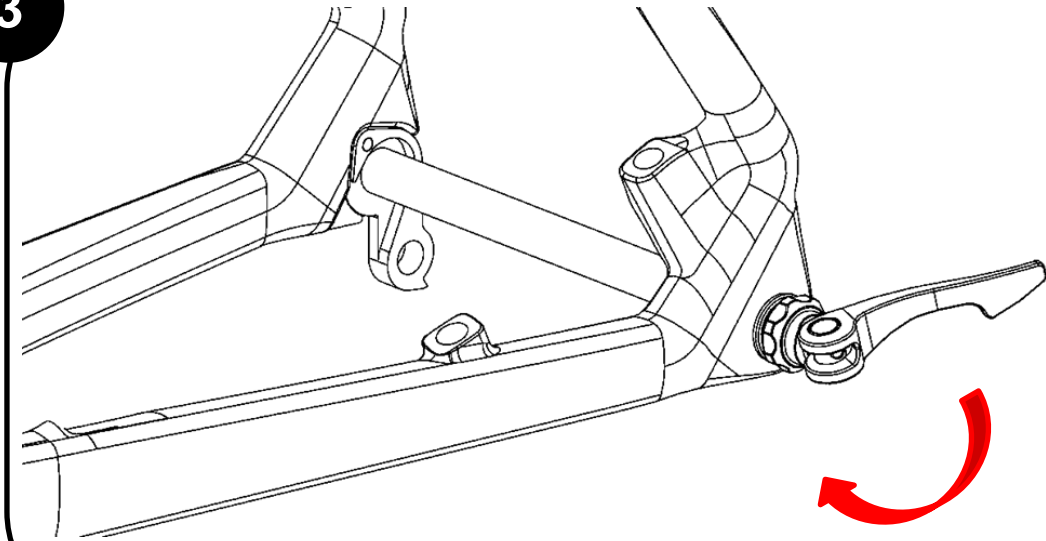
Insert the RAT axle with open lever in the correct position.
The T-end of the axle should be aligned with the insert.

2



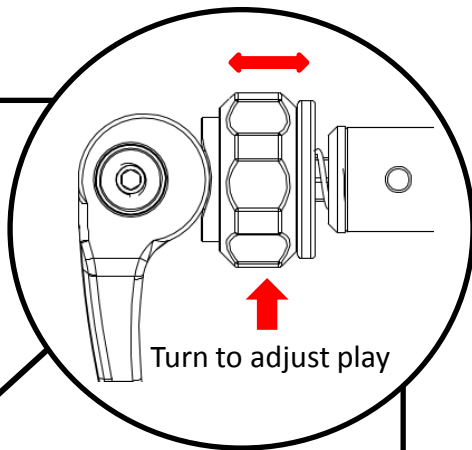
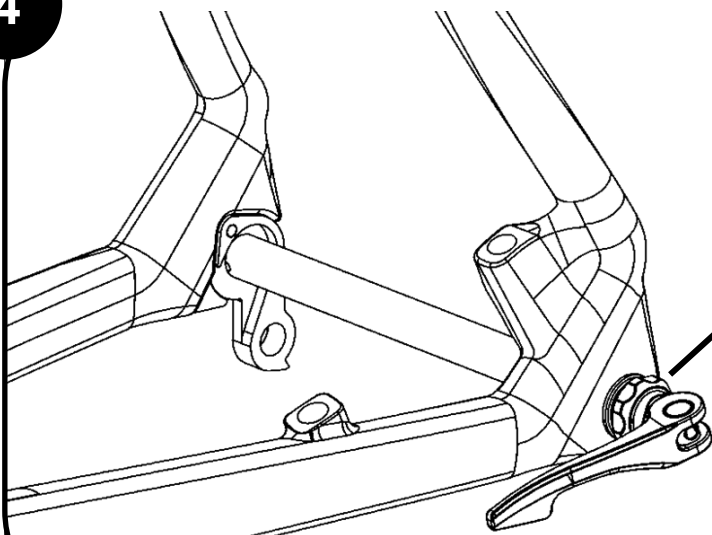
Rotate the axle 90° clockwise till the T-End is stopped by the insert.
Never overtighten the axle or use a lot of force to turn it.
The axle should rotate easily.

3



Flip the lever ca. 180° till it stops

4

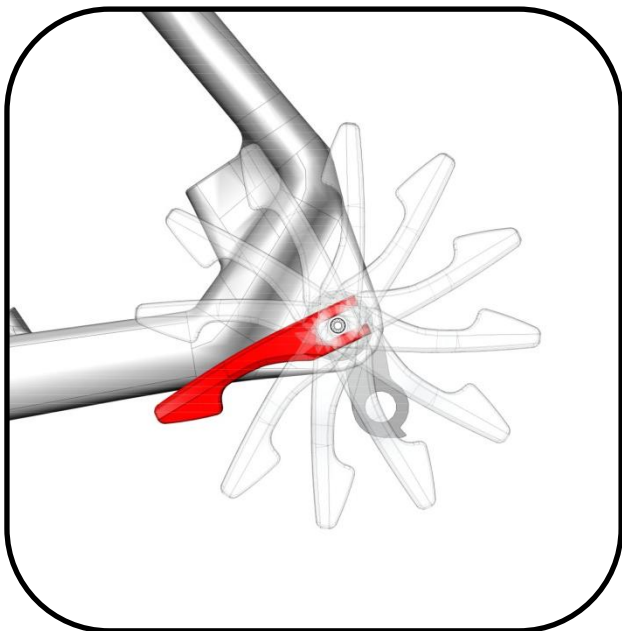


If the lever is clamping to much/less adjust the adjust dial until the lever is clamping stoutly. Only adjust screw with open lever!



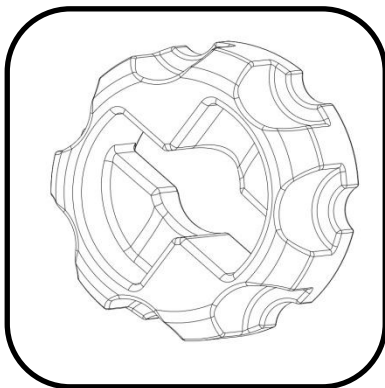
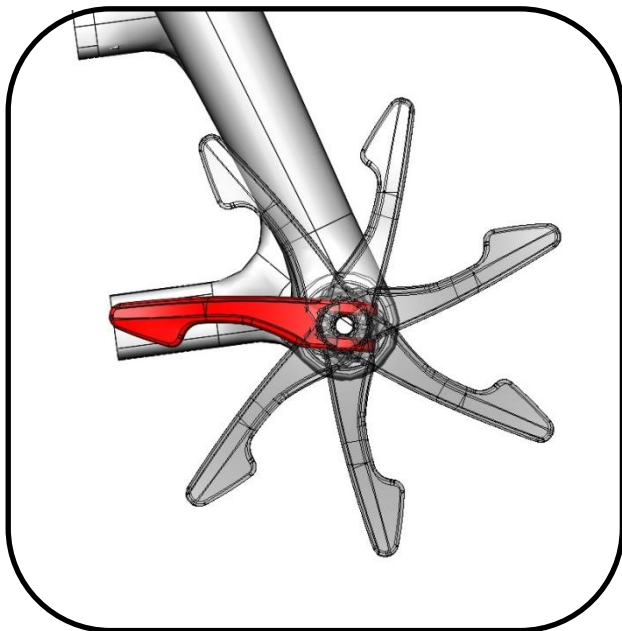
Incorrect closed lever or low clamping force could result in disengagement of wheel which may result in injuries or death





Insert rear

Rear lever position can be adjusted like your personal preference. Just turn the Insert on the drive side in the position you want. Each grooving is changing the position about 30° degree



Insert front

Front lever position can be adjusted as well. The front insert has 7 positions. Each grooving is changing the position about 51,5° degree.